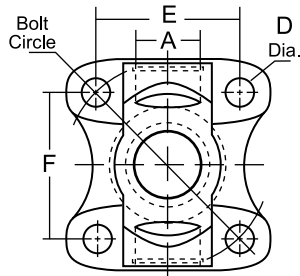
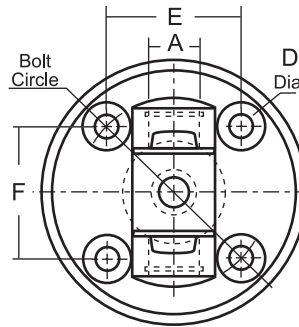
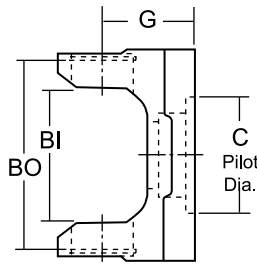


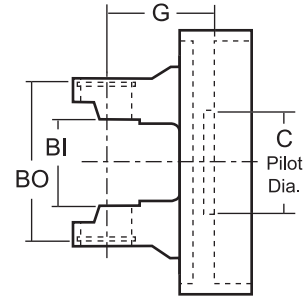
New Flange Yokes Available from



Type 1



Type 8



RDL Part No.	Yoke Type	A Bearing Dia.	BI / BO U-Joint Lockup	C Pilot Dia.	Bolt Hole Dimensions			G CL to Flange End	Bolt Circle
					Holes	D	E		

430 Series (Staked-In Applications)*

Use RDL Kit - 430-14

414-2-3350	Type 1	1.066	1.780-(I)	2.163-F	4	.490	3.200	3.200	2.125	4.500	*Jeep Bolt Pattern
414-2-3351	Type 8	1.066	1.780-(I)	2.163-F	4	.490	2.780	2.780	2.125	3.938	*Jeep Bolt Pattern

1310 Series (Conversion Applications)

Use RDL Kit - K153

R2-2-3200	Type 1	1.063	3.217-(O)	2.163-F	4	.490	3.200	3.200	2.125	4.500	*Jeep Bolt Pattern
R2-2-3201	Type 8	1.063	3.217-(O)	2.163-F	4	.490	2.780	2.780	2.125	3.938	*Jeep Bolt Pattern



**Wondering what you can do with all those Aluminum Drivshafts that use the Staked-In style U-joints? Rockford Drive Line has your solution...*

The 430 Series flanges above will allow you to salvage the aluminum tubing and yokes by replacing the failed u-joint with a 430-14, along with the steel flange yoke. The U-Joints work with the aluminum weld yokes as long as they are not worn.

If your aluminum tubing or weld yokes are damaged the 1310 conversion flanges are the way to go... Pick up a set of flanges, build a replacement shaft and save BIG MONEY!!



Make/Model	Year
Jeep Commander*	2006-10
Jeep Grand Cherokee*	2005-10